

	Page
54 12 004 Adjusting Steel Sliding Roof	54-12/1
100 Removing and Installing Steel Sliding Roof Lid	12/2
120 Replacing Steel Sliding Roof Lid Seal	12/2
130 Replacing Headliner Frame	12/3
230 Removing and Installing Manual Steel Sliding Roof Gear	12/3
Troubleshooting Steel Sliding Roof	12/7

54 12 004 ADJUSTING STEEL SLIDING ROOF

Description of Function

Steel sliding roof has two functions.
a) as sliding roof b) as lifting roof

A switch for this purpose is located on right-hand side of winder. Switching is only possible when lid is wound shut.

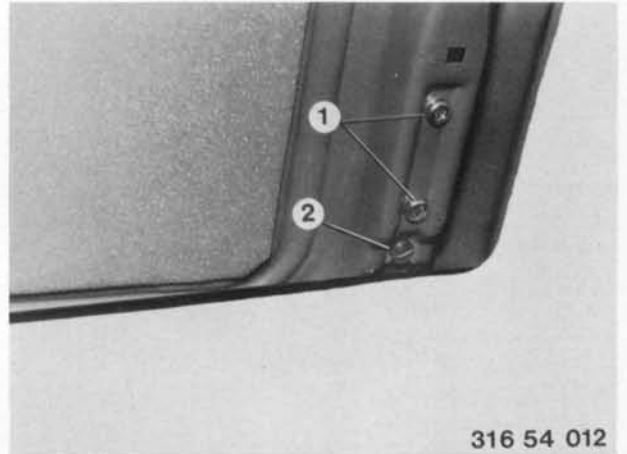
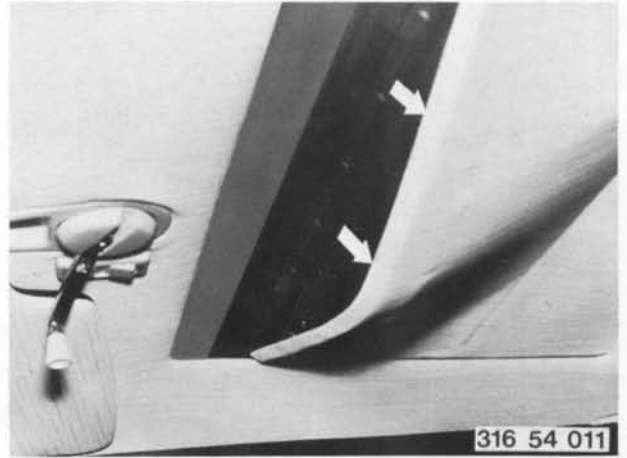
Open steel sliding roof lid by about 5 cm (2").
Press off and slide back front headliner frame.
Shut steel sliding roof lid.

Front Height Adjustment

Ideal adjustment is when lid is about 1 mm (0.040") deeper than outer roof panel surface.

Loosen screws (1) and make correction with height adjusting screw (2).

Tighten screws (1) again.



Rear Height Adjustment

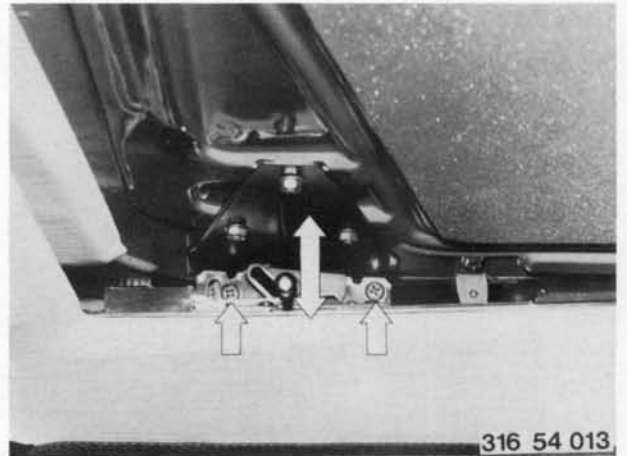
Ideal adjustment is when lid is about 1 mm (0.040") higher than outer roof panel surface.

Loosen screws on gate holder.

Now adjust lid in slots.

Tighten screws again.

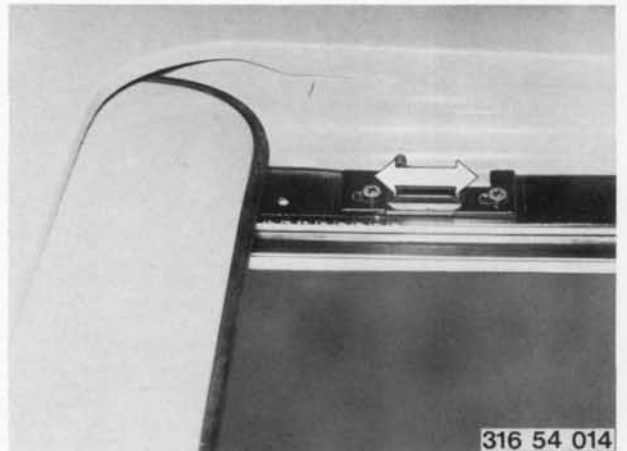
If this correction is not sufficient, place shims between lid and holder.

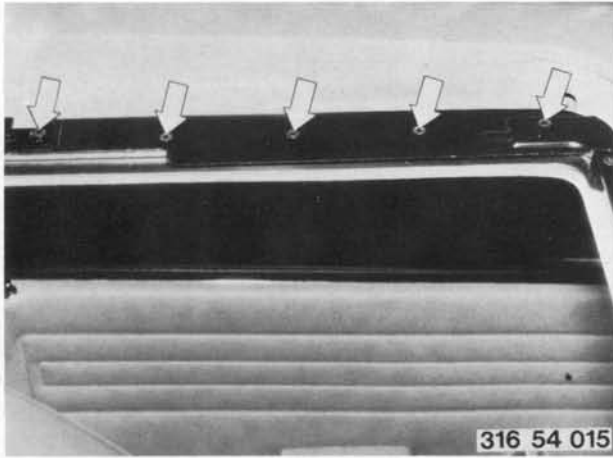


Lifting Position

When in lifting position the steel sliding roof lid must be against the front edge of roof opening.

Correct adjustment by moving guide pins.

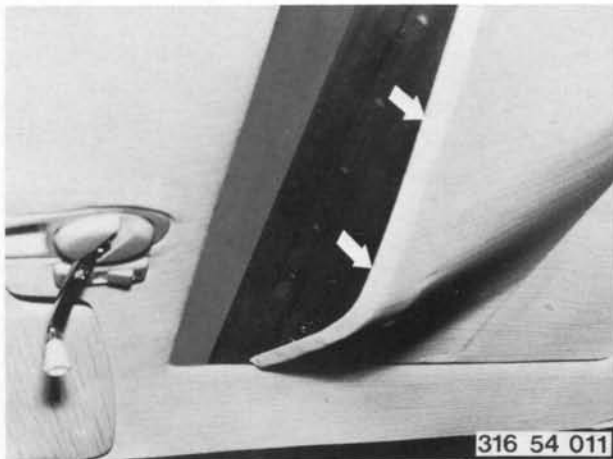




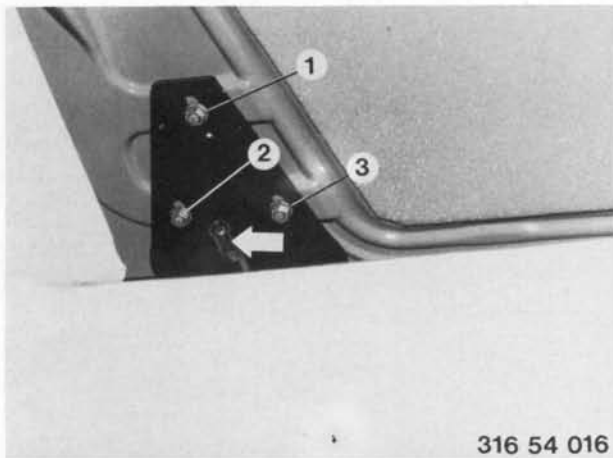
54 12 100 REMOVING AND INSTALLING STEEL SLIDING ROOF LID

Open sliding roof lid all the way.
Remove upper left and right guide rails.

Installation Note! Lubricate guide rails with vaseline.



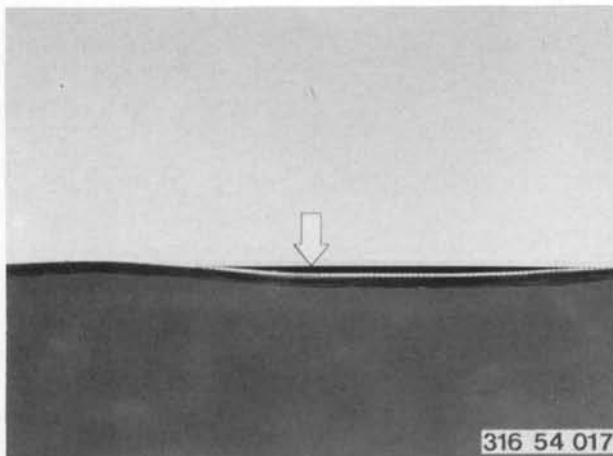
Shut sliding roof lid leaving a gap of about 5 cm (2").
Press off and slide back front headliner frame.
Close sliding roof lid all the way.



Unscrew left and right nuts (1 ... 3).
Remove steel sliding roof lid.

Caution! There could be shims between lid and holder.

Installation Note! Attach rear of sliding roof lid at holder, pulling in holder slightly.
Slide back gate holder by hand and with help of gear.



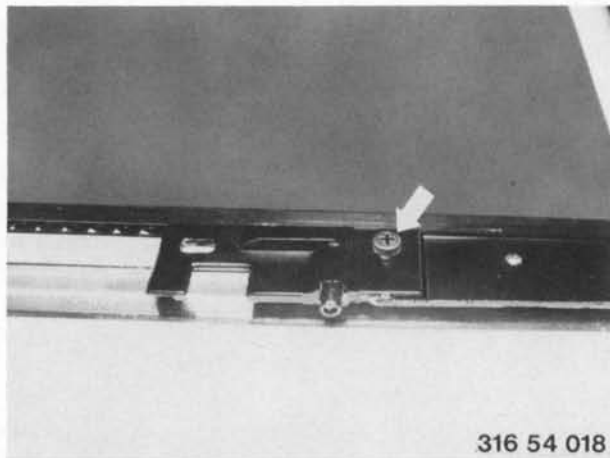
54 12 120 REPLACING LID SEAL

Remove and install sliding roof lid - 54 12 100.
Pull seal off of lid.

Installation Note! Paste seal with white Terokal 2012 adhesive.

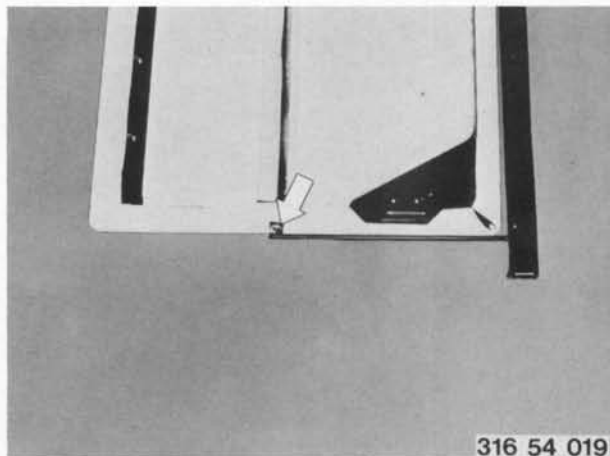
54 12 130 REPLACING ENTIRE HEADLINER FRAME

Remove and install sliding roof lid - 54 12 100.
Mark location of guide pins with a scribe to facilitate installation and remove. -
Tilt gate holder forward and remove headliner frame.



316 54 018

Unrivet rear water drain from headliner frame.



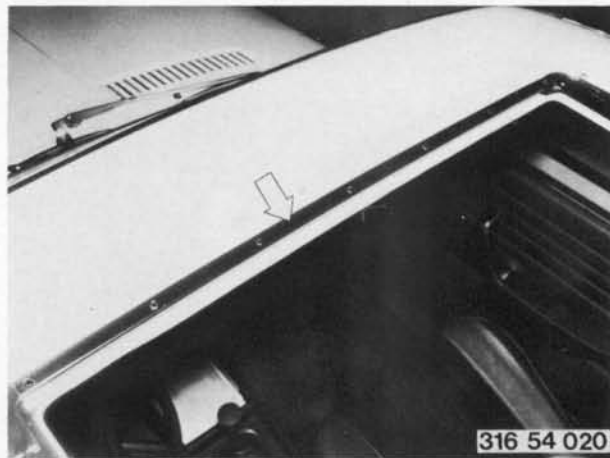
316 54 019

54 12 230 REMOVING AND INSTALLING MANUAL STEEL SLIDING ROOF GEAR

Open steel sliding roof lid.
Remove front guide rail.
Detach part of headliner.

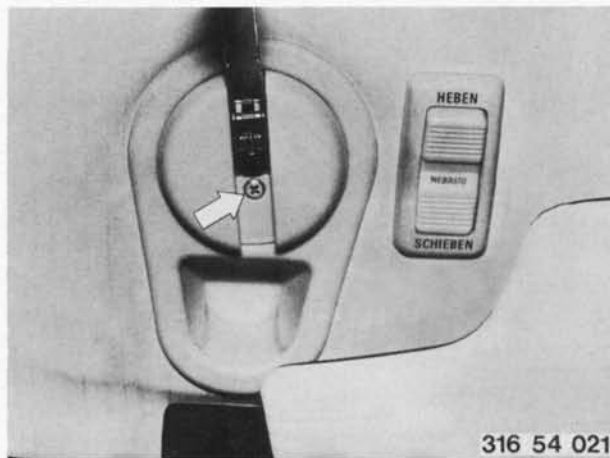
Installation Note! Place Terostat cord underneath guide rail.

Paste headliner with Terokal 2444.

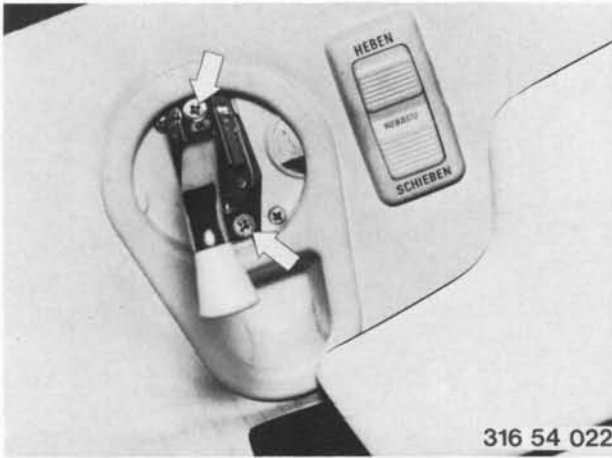


316 54 020

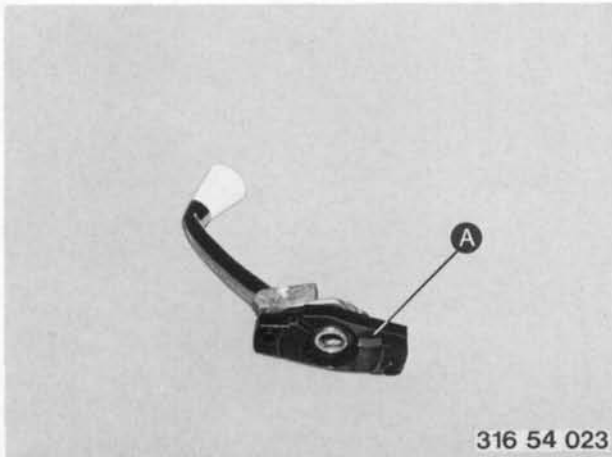
Shut sliding roof lid.
Remove cover.



316 54 021



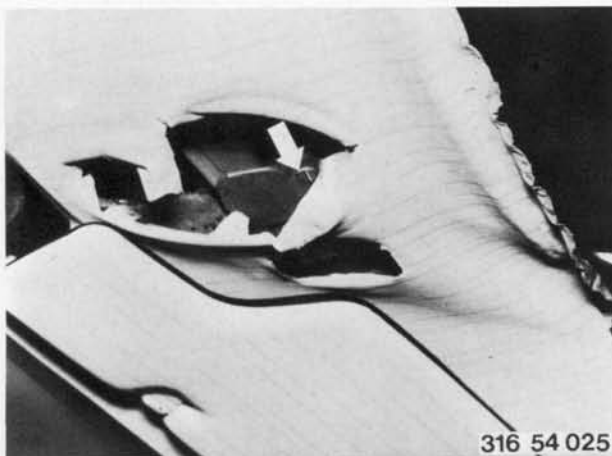
Loosen screws and remove winder.



Installation Note! Opening A of winder holder faces left.



Remove winder escutcheon.
Lift out switch escutcheon.

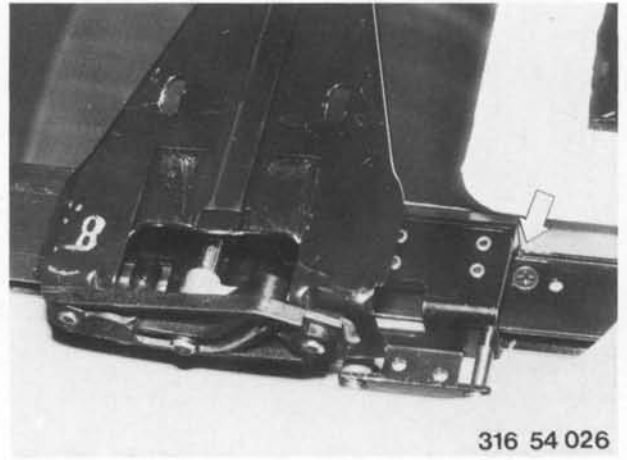


Loosen gear mounting screw and remove gear.

Installation Note! Set gear at off position by turning to the right (catch heard in gear). Switch must be operatable. Steel sliding roof lid must be shut.

Basic Adjustment

Gear in off position and gate holder at mark (rear edge of gate holder must align with mark on guide rails).



316 54 026

TROUBLESHOOTING STEEL SLIDING ROOF

Condition	Cause	Correction
Grinding noise when lifting	Front seal dry	Lubricate front seal with vaseline
Rattling noise	a) Front slides defective b) Slide screws loose c) Adjustment wrong	a) Replace front slides b) Tighten screws c) Adjust sliding roof
Lid leaks	Seal loose at corners	Paste seal at corners with white Terokal 2012
Sliding roof lid can only be lifted, but not slid	Pins on gate holder bent	Replace gate holder
Lid pops up on one side	a) Basic adjustment of rear guide (cables) not uniform b) Gear loose	a) Correct basic adjustment b) Tighten gear